

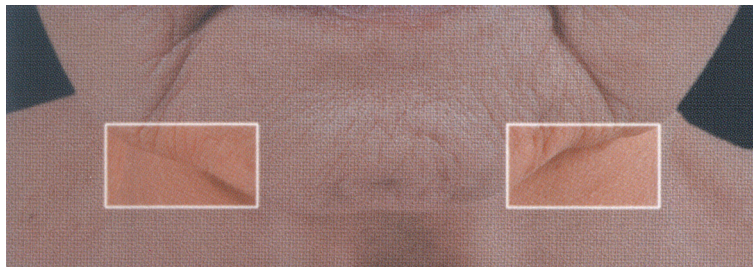


Re-PLASTY PRESCRIPTION

— THE 1ST MADE-TO-MEASURE COSMETIC INTERVENTION —
“PERFECT BEAUTIFUL SKIN”



CLINICAL DIAGNOSIS GUIDE
Asian version
INTERNAL USE ONLY



DEFINITION

Sagging of the lower part of the face due to the gravity.
It causes a deformation of the face's original oval shape.

AREA

Lower part of the cheek on both sides of the chin.

EVALUATION

- ➔ Evaluate the sagging severity of the lower part of the face on each side of the chin.
- ➔ Do not take into account the double chin if it exists.

PLASTY SCRIPTION

STANCE



PLUMPNESS



Pictures and explanations extracted from SKIN AGEING ATLAS Volume 2 Asian Type (p.66-67), L'Oreal Research.



DEFINITION

It is about folds originating at the edge of the eye orbit, found at the malar zone, below crow's feet, eye orbit excepted.

AREA

Bounded above by the edge of the eye orbit, stretch laterally and downward on the malar zone.

EVALUATION

- ➔ Evaluate the depth of the deepest wrinkle.
- ➔ Do not take into account wrinkles, fine wrinkles and folds in the inferior.
- ➔ Do not take into account the number of wrinkles.
- ➔ Do not take into account the length of wrinkles.
- ➔ Do not take into account scars.

PLASTY SCRIPTION

STANCE



WRINKLES

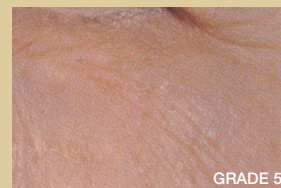
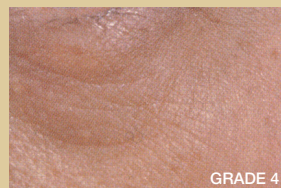
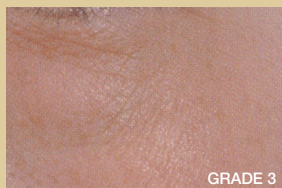
1

Smooth skin/
fine lines



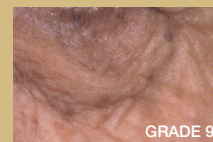
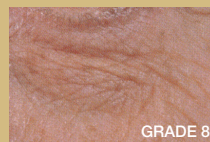
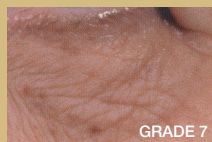
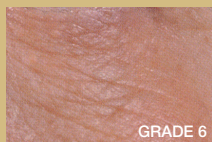
2

Medium



3

Deep
wrinkles



Pictures and explanations extracted from SKIN AGEING ATLAS Volume 2 Asian Type (p.46- 47), L'Oreal Research.



DEFINITION

Sebaceous pores on the cheek.

AREA

On the cheek, area delimited by the nasolabial fold and the orbit's fold.

EVALUATION

- ➔ Evaluate the size of the pores by scoring the average size of the 10 biggest pores.
- ➔ Do not take into account the number of pores.
- ➔ Do not take into account the pores inside the wrinkles.

PLASTY

SCRIPTION

KTURE



ED PORES

1
Few



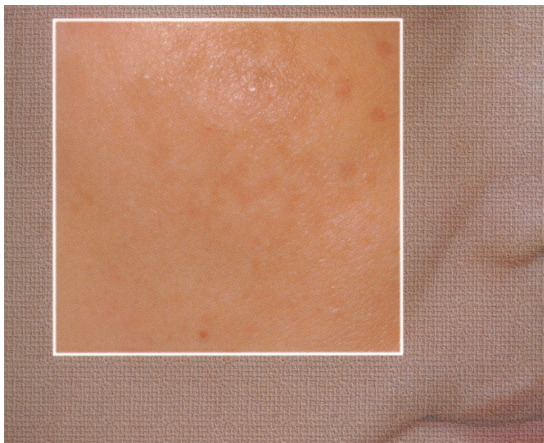
2
Medium



3
A lot



Pictures and explanations extracted from SKIN AGEING ATLAS Volume 2 Asian Type (p.60- 61), L'Oreal Research.



DEFINITION

Pigmentary spots of relatively big size presenting at the area of cheek bone

AREA

Malar zone.

EVALUATION

- ➔ Evaluate the gravity of the spots according to the following order:
 - > Number.
 - > Contrast.
 - > Size.

PLASTY

SCRIPTION

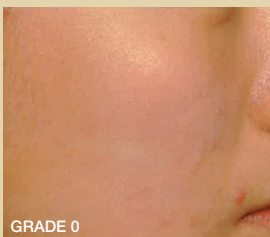
ONE



ATION SPOTS

1

Few



2

Medium



3

A lot



Pictures and explanations extracted from SKIN AGEING ATLAS Volume 2 Asian Type (p.83- 84- 85), L'Oréal Research.

